

Makagic Firmware Upgrade Guide

This upgrade is designed to enhance your user experience, improve system stability, and introduce new features.

Please read this guide carefully. It will walk you through the upgrade process step by step, helping you complete it safely and easily.

Welcome to the MakaGic Firmware Upgrade Tool. Thank you for choosing our product.

We continuously improve and update our firmware to ensure your device performs at its best. This upgrade is designed to enhance your user experience, improve system stability, and introduce new features.

Please read this guide carefully. It will walk you through the upgrade process step by step, helping you complete it safely and easily.

I. Core Firmware Upgrade Features

New Foot Switch Support Added compatibility with our new foot switch accessory, allowing hands-free control of the vise for easier and more convenient operation.

Auto-Sleep Function Removed Eliminated the auto-sleep feature to reduce unnecessary wake-up steps. This ensures continuous rotation and avoids interruptions during use.

Improved Performance Optimized internal functionality for smoother, more fluid vise movement.

II. Requirements for Firmware Upgrade

Makagic Tool (Makagic VS-01 Smart Vise) This is the device that will be upgraded using the firmware.

MakaGic Upgrade Assistant Make sure the firmware upgrade software is downloaded and installed on your computer.

Type-C Cable Used to connect the smart vise to your computer. It's recommended to use a mobile data cable for reliable data transmission.

Computer Used to run the MakaGic Upgrade Assistant and connect to the smart vise. For best results, use a computer with stable performance and good system compatibility.

III. Upgrade Operation Guide

Note: You can safely ignore any firewall warnings after downloading

1. Extract the compressed file, then double-click the tool to run it and start the software upgrade.

Important: To proceed with the download, click on the link below. Please fill out the quick dropdown form, as shown in the image, to access the download files

[DOWNLOAD UPGRADE ASSISTANCE FILE & FIRMWARE](#)

EXPERT GUIDES

Download ready-to-use CAD files and step-by-step guides

◆ What You Get:

- ✓ Makagic **Upgrade Assistant File** and **Firmware**
- ✓ **Free Design Files**(STEP, DXF, PDF) – Compatible with most CNC and manual machines.
- ✓ **Pro Tips**– Avoid common clamping mistakes with our included setup guide.
- ✓ **Exclusive Access**– Get new designs, tutorials, manuals, and firmware updates straight to your inbox.

1 **Enter to Download** **2**

Full Name* Email*

3 Work/Study/Interest*

4 Other

Powered By: Squadkin

After submitting the "Download" form, the product information page containing the download files will open in a new window. From the Product Information page;

1A. Click "Upgrade" on the left menu

DOWNLOAD

PRODUCT INFORMATION

Product Manual	Product Manual	
Upgrade 1	Product Manual(MakaGiC-VS01)	↓ Download
Other		

1B. In the Upgrade section, download the "Upgrade Assistant" file

DOWNLOAD

PRODUCT INFORMATION

	Upgrade	
Product Manual	Upgrade firmware V1.0	↓ Download
Upgrade	Upgrade firmware V1.2.2 (for footswitch)	↓ Download
Other	Upgrade Assistant	↓ Download 2
	Upgrade Guide	↓ Download

1C. While still on the Product Information page, download the Firmware File, save it in an easy-to-access folder (for example downloads folder)

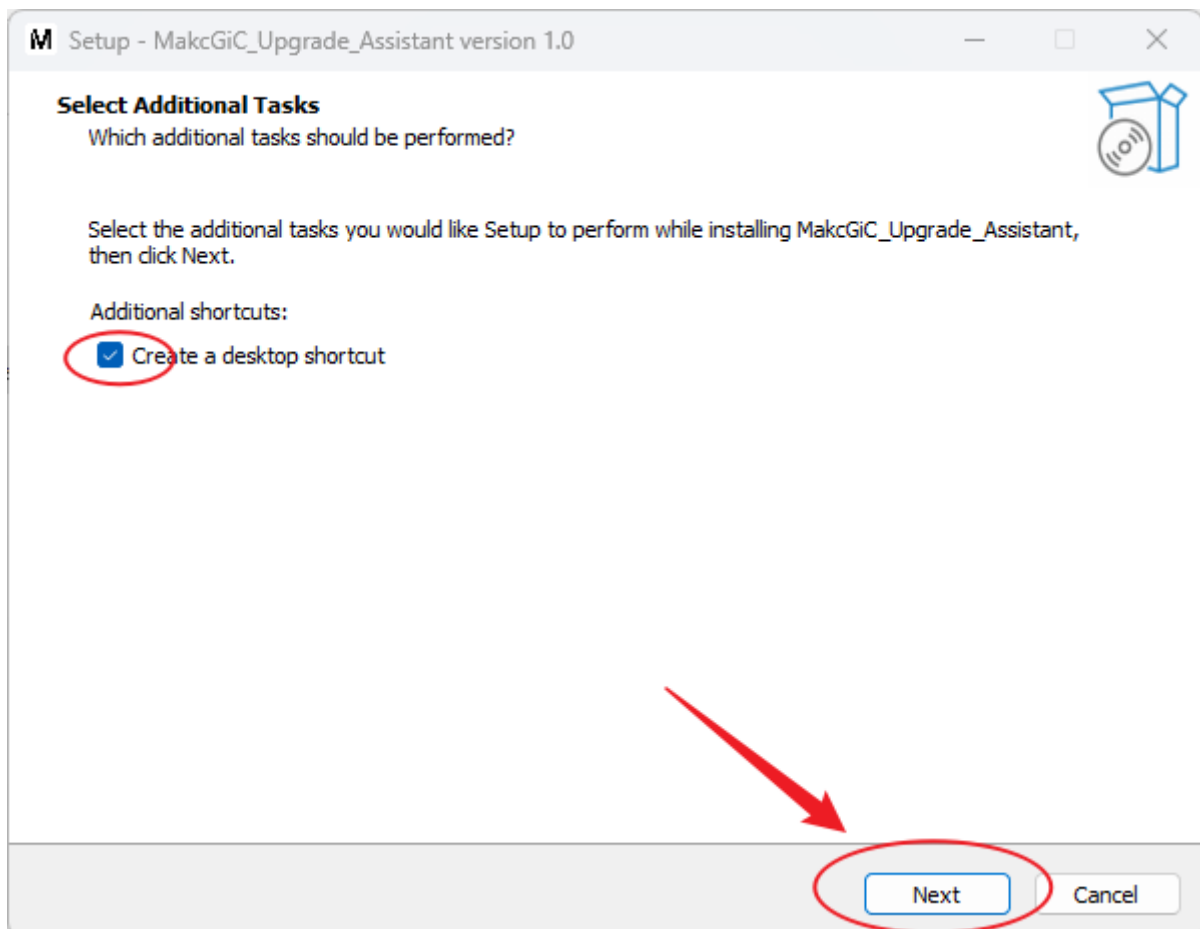
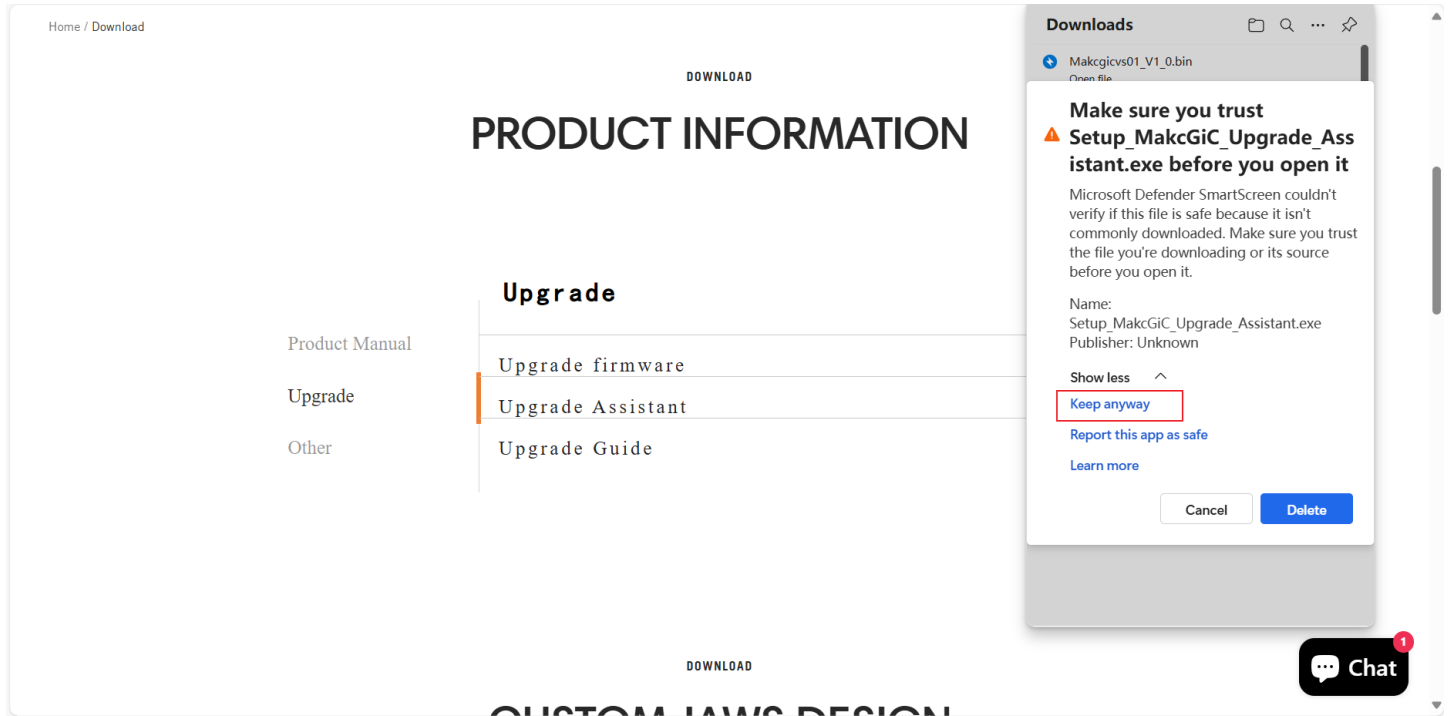
DOWNLOAD

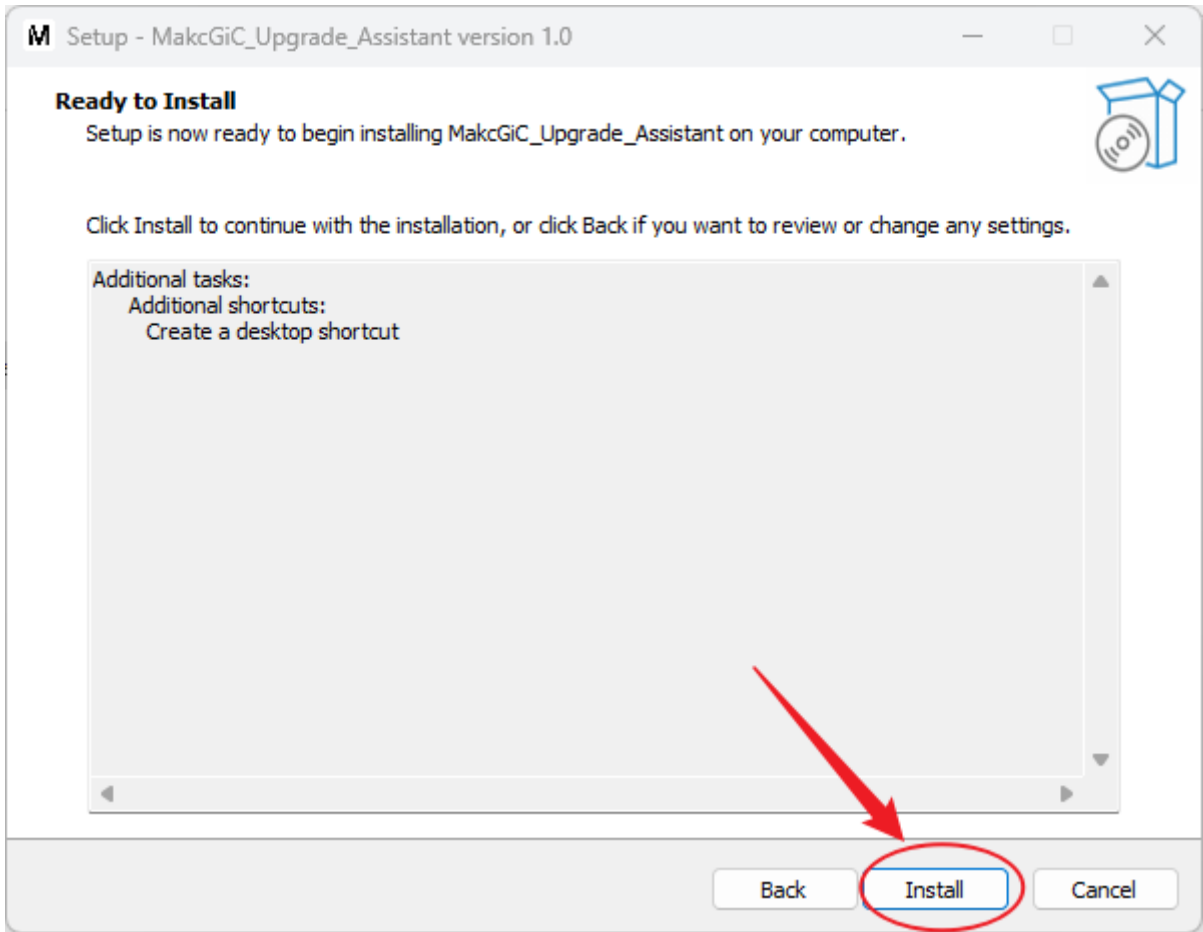
PRODUCT INFORMATION

	Upgrade	
Product Manual	Upgrade firmware V1.0	↓ Download
Upgrade	Upgrade firmware V1.2.2 (for footswitch)	↓ Download 3
Other	Upgrade Assistant	↓ Download
	Upgrade Guide	↓ Download

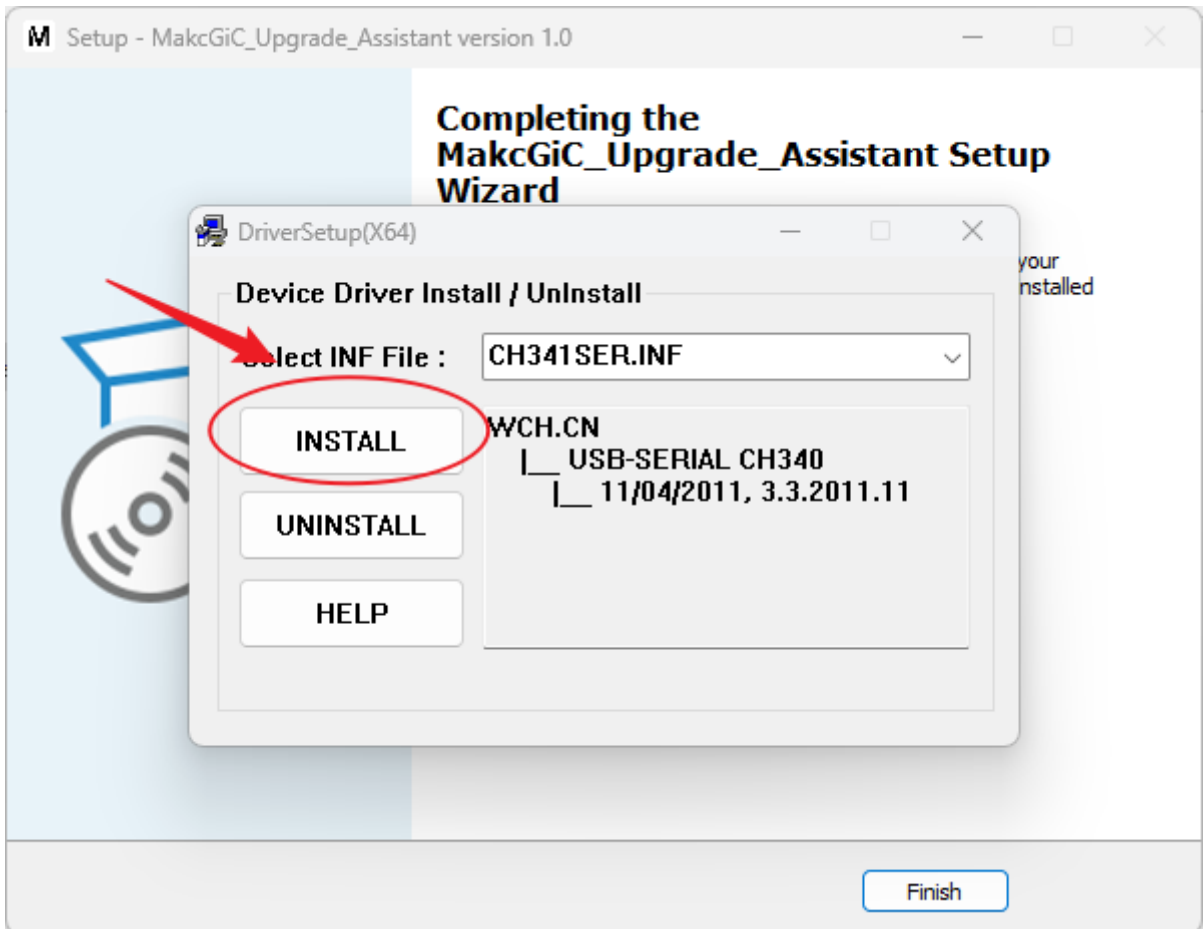
Run the Makagic Upgrade Assistant" file downloaded in 1a & 1b above

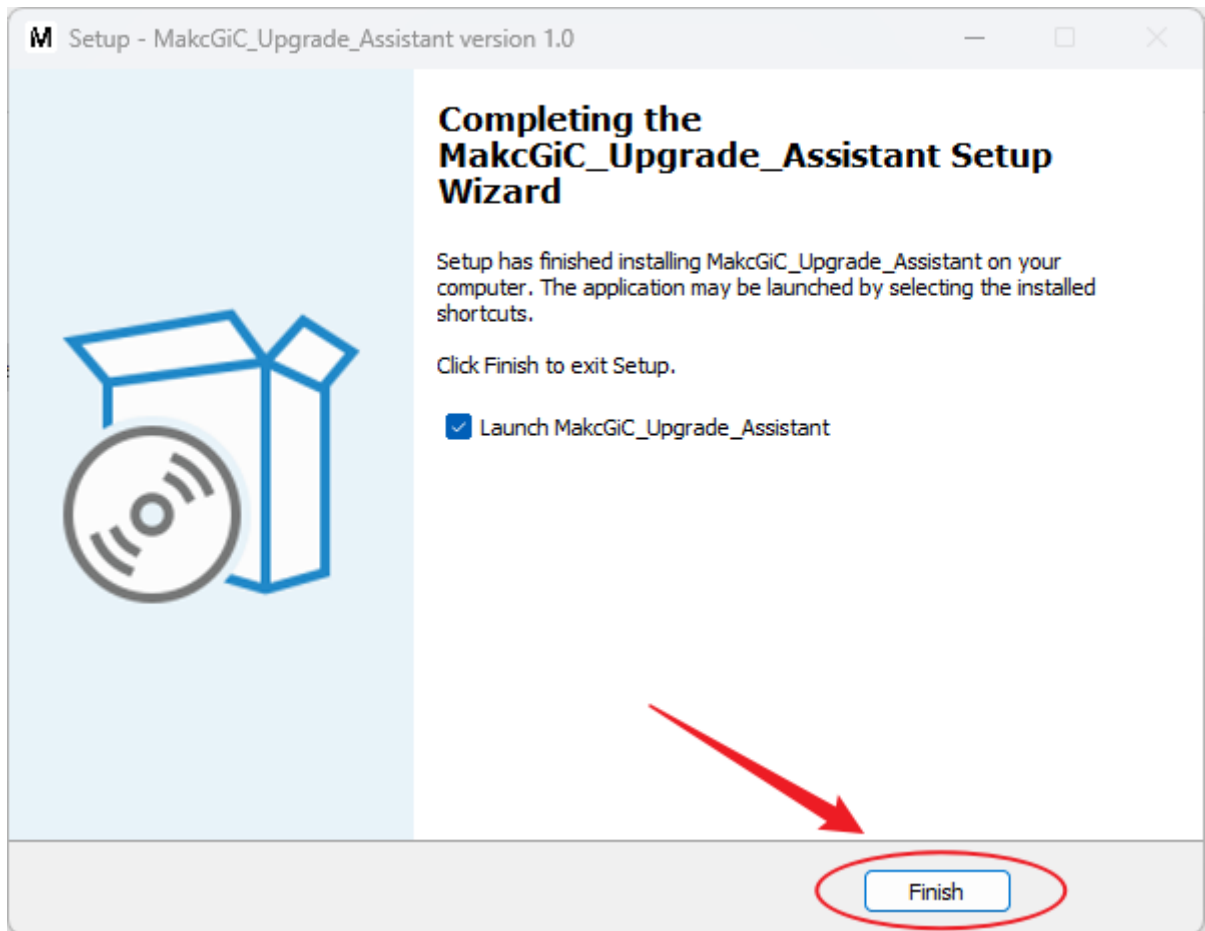
Note: You can safely ignore any firewall warnings after downloading





Finish Install





1. Confirm the USB Serial Number before Updating the program

Use a USB Type-C cable to connect the machine to your computer.

Press **Windows Key + X**, then press **M** to open Device Manager.

Look under **Ports (COM & LPT)**.

Find a device listed as "**USB-SERIAL CH340**" or something similar. The Serial Number will be expressed in the form of COM plus a number. Please remember the COM number corresponding to your device.

Troubleshooting: If the USB serial number or device port is not displayed:

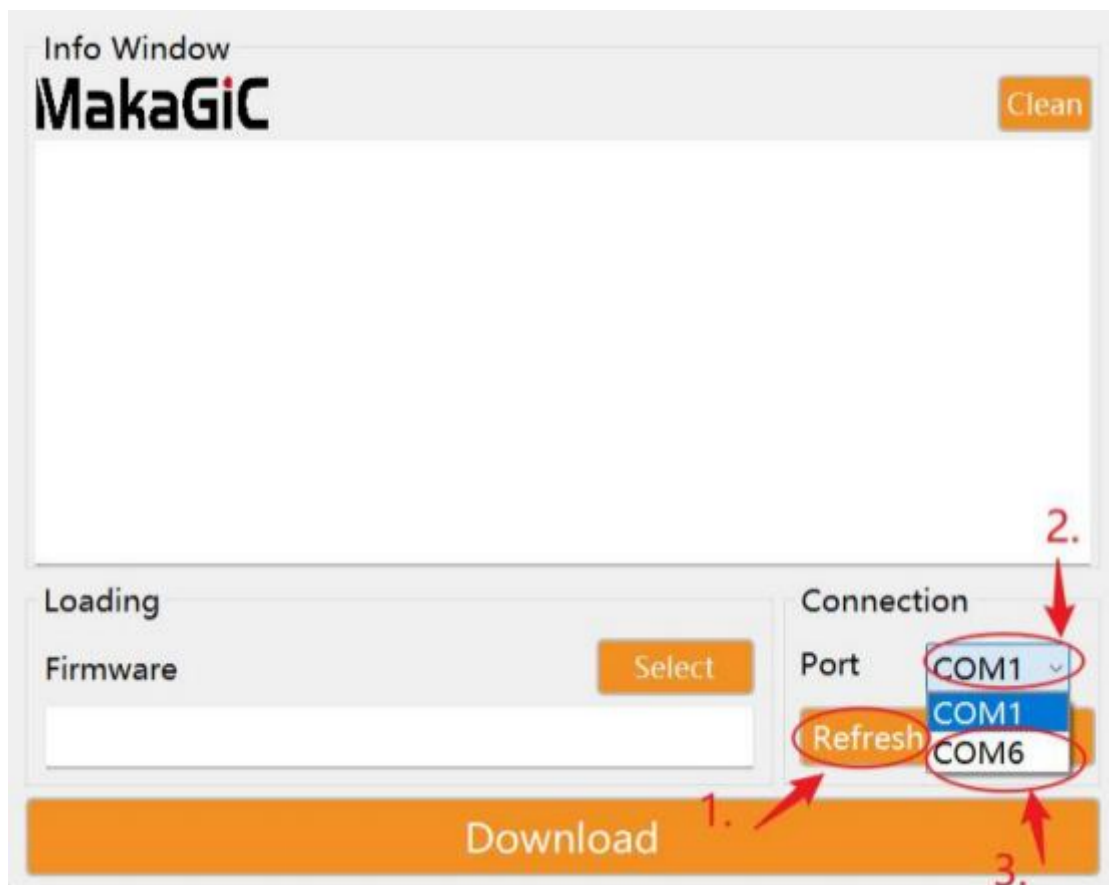
Check that the cable is properly connected.

Try a different USB cable or port.

Restart the machine and check again.



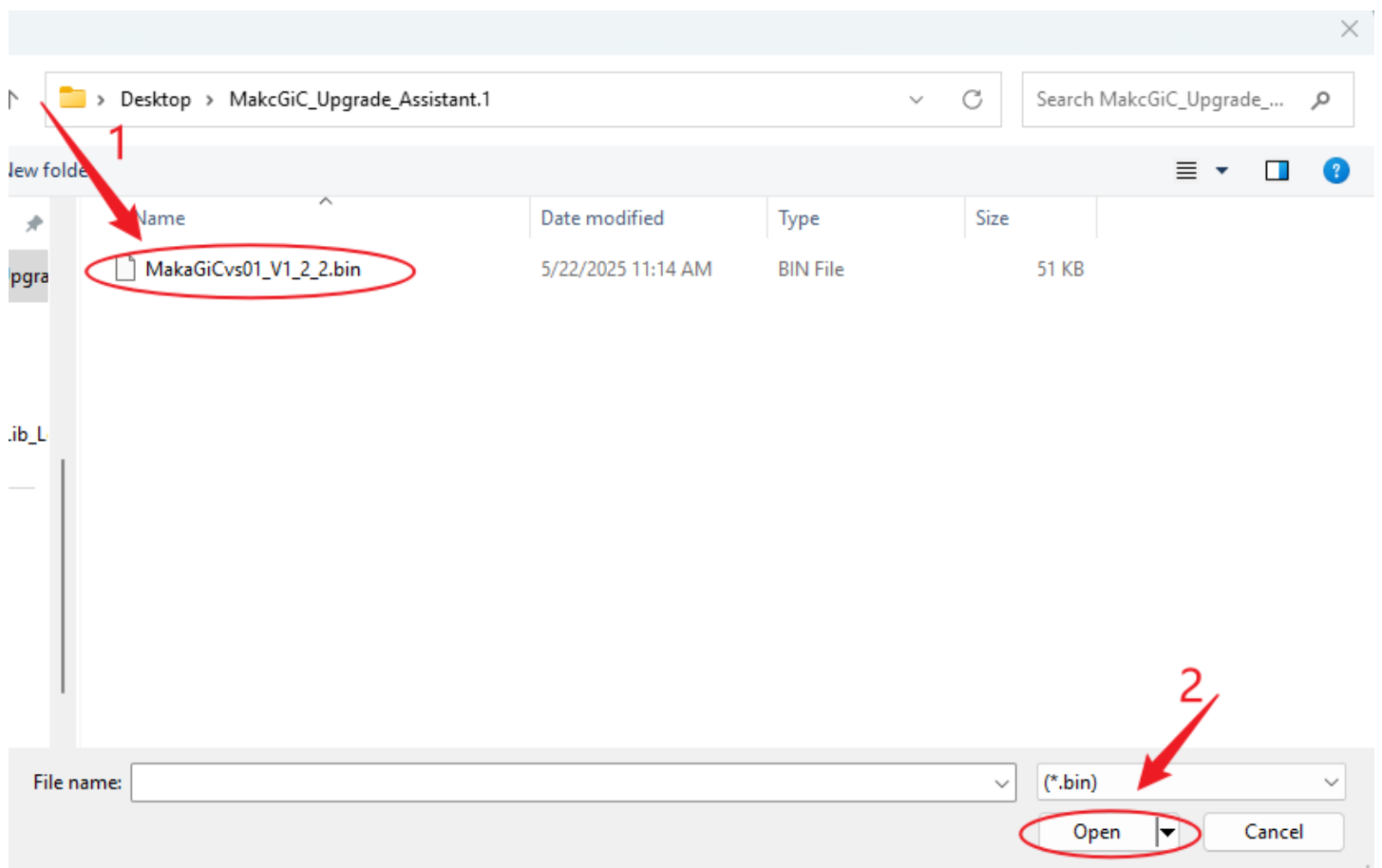
2. Click the refresh button, then open the serial chart frame and select the corresponding USB-SERIAL CH340 port.

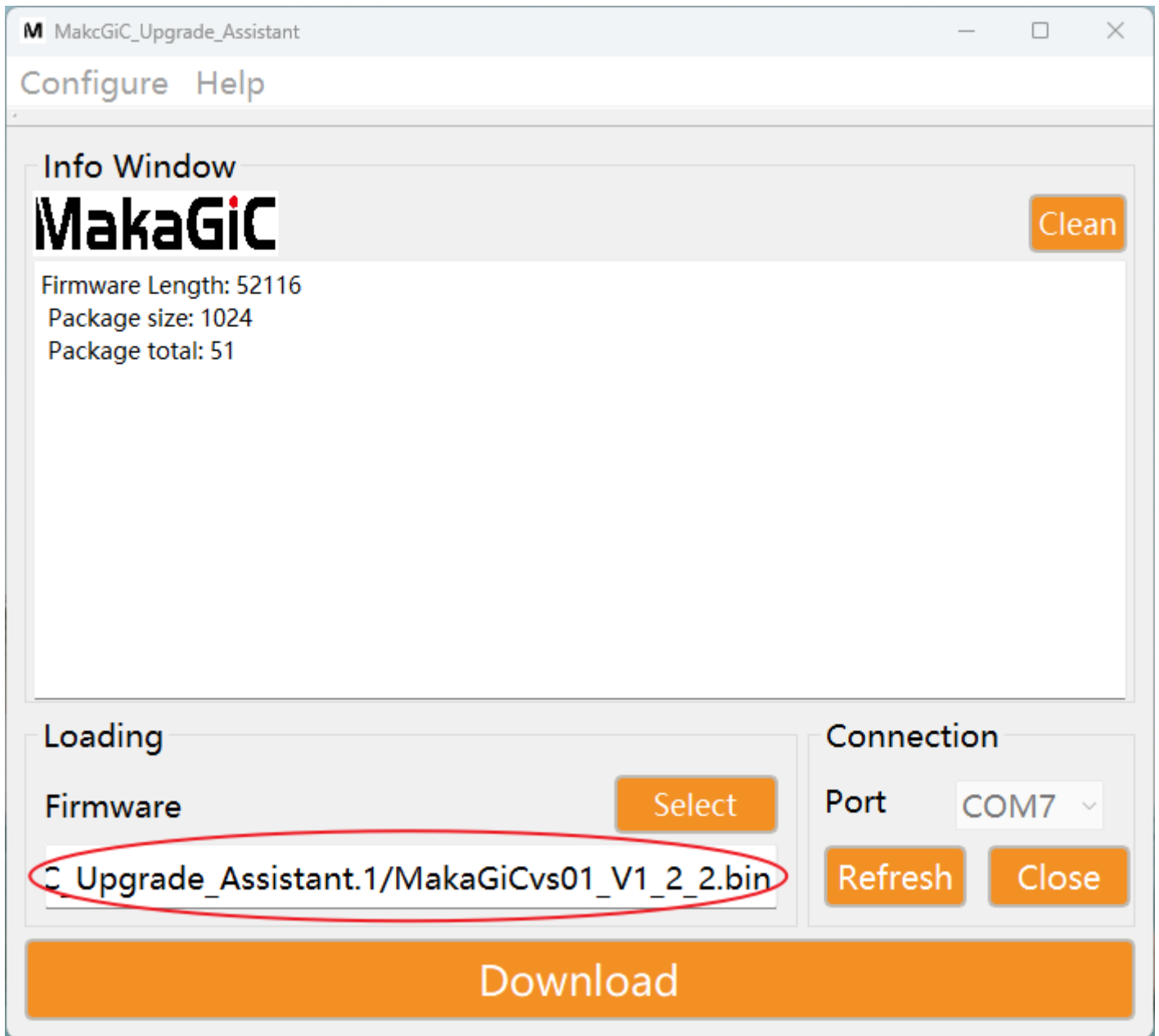


3. Click Open to open the serial port.

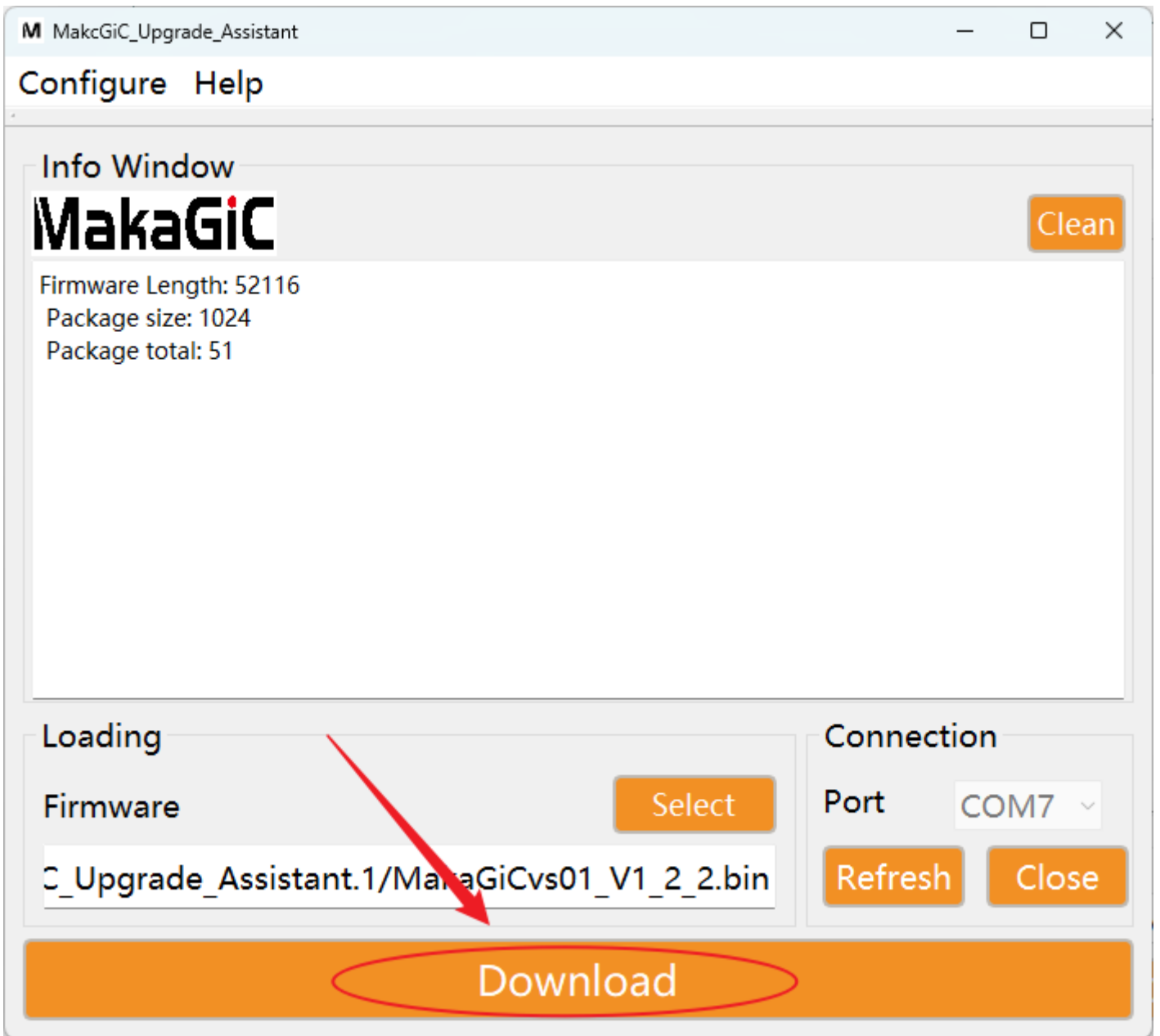


4. Click the select button, choose the Firmware file from your downloads folder

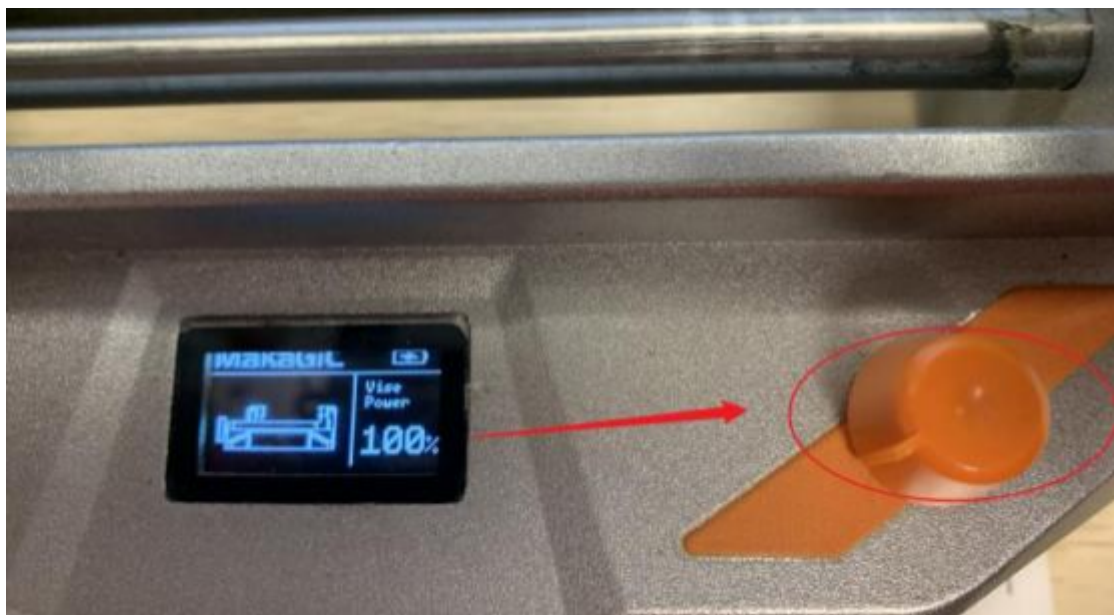




5. Click to download after the window appears with the message "Firmware "



6. After pressing, the interface displays a message waiting to load the firmware information. At this point, press the machine menu button, select the upgrade option, and click.





7. If the following screen appears, please wait for the download to complete. (In the meantime, please do not touch it, if the following page does not appear or jumps back to the homepage, please reconnect the machine and start the operation from the very beginning)



8. As shown in the figure below, the program upgrade has been completed. The machine display changes back to the home page. You can now run the machine to try out the new features!



IV. Regarding other information

If you wish to learn more, please visit our official website at www.makagic.com or click the icon to find out more.



V. Precautions

Check Connection Stability Use a high-quality mobile data cable to ensure reliable transmission. When connecting the device to your computer, make sure the cable is securely plugged in. If the connection is unstable, try re-plugging or replacing the cable to avoid upgrade failure due to poor contact.

Verify Port Recognition In Device Manager (Windows), identify the correct port labeled **USB-SERIAL CH340**. Selecting the wrong port can cause communication issues. If the port is not visible, check the data cable connection and confirm that the necessary drivers are correctly installed and up to date.

Select the Correct Firmware File Make sure to choose the correct `.bin` firmware file. Using an incorrect file may lead to compatibility issues or malfunction after the upgrade.

Follow Upgrade Steps Carefully Follow the guide instructions exactly. For example, click the “Download” button before selecting the upgrade option on the device. Do not close the MakaGic Tool or disconnect the device during the process. Improper timing or actions may cause the upgrade to fail.

Monitor Device Status Pay attention to prompts, status indicators, and lights on the device during the upgrade. This helps detect any problems early, such as unexpected restarts or firmware loading errors.

Visit the Official Website for Support If you experience issues or need more information, visit our official website at www.makagic.com. or contact us at support@makagic.com